

Guitar 1

Libertango

Astor Piazzolla
arr. Kevin Ray and Michael Tseitlin

♩ = 140

8

9

$\frac{1}{2}$ CV

$\frac{1}{2}$ CVII

$\frac{1}{2}$ CV

p

15

17

f

21

$\frac{1}{2}$ CV

26

2

0 1

32

33

V

IV

mp

36

V

$\frac{1}{2}$ CV

40

IV

44

0 1

49

p *i* *m* *a*

mf

VI

V

IV

III

II

I

② > ①

⑤ ③

53

57 *sim.* (m. 33)

61



65



69

69

[illegible]

77

77

89 *a m i a m i a m*

p

IX

94 *p* 97 IX *ff* Am

Guitar 2

Libertango

Astor Piazzolla

arr. Kevin Ray and Michael Tseitlin

$\text{♩} = 140$

8

9 *p* *i* *m* *i* *m* *i* *p*

p

12

3 2

②

f

17

2

IV

1 2

4 3

$\frac{1}{2}\text{CV}$

1 3

f

24

2

IV

2 4

3 1

2

31

$\frac{1}{2}\text{CIV}$

1 2 1 2 1 1 4

$\frac{1}{2}\text{CVII}$

1 3 1

1 3 1 3

33

4

— 4

2 1 4

1

37

4

4

2 1 4 3

4

$\frac{1}{2}\text{CV}$

1 1 3

4

43

E

49

III

V

VI

V

IV

III

II

I

0

III

mf

55

1

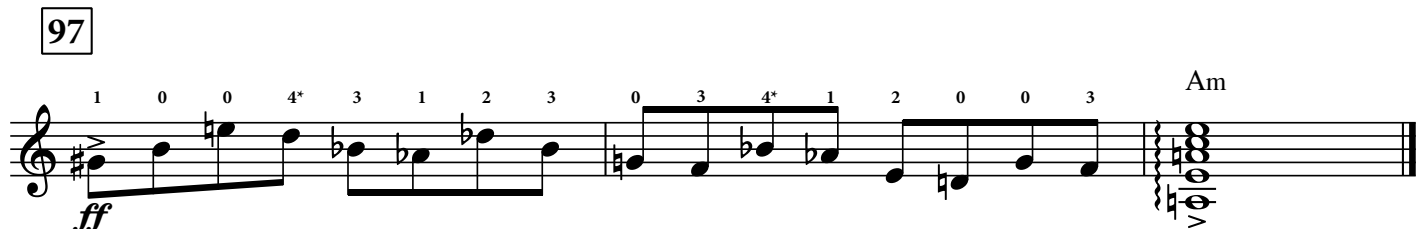
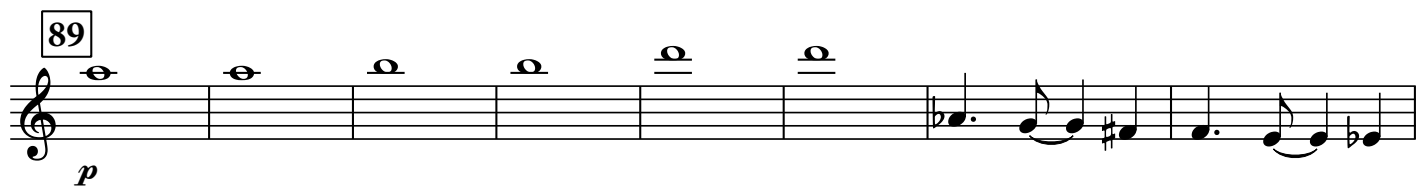
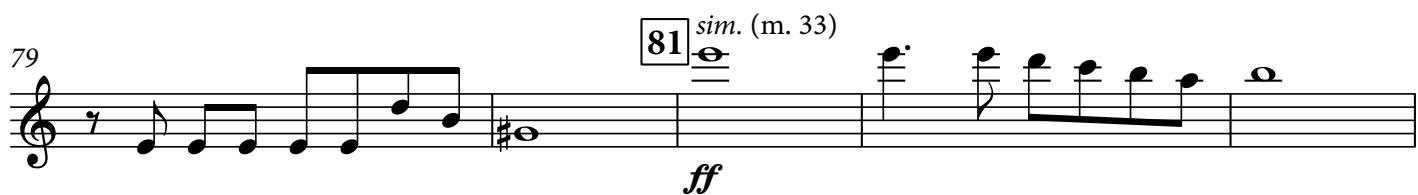
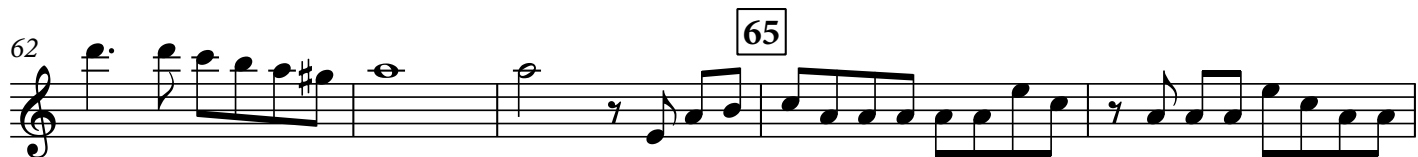
3

1

2

57 *sim.* (m. 33)

f



Guitar 3

Libertango

Astor Piazzolla

arr. Kevin Ray and Michael Tseitlin

♩ = 140

Am

x: slap strings
over soundhole

Am

B7

sim.

4

Dm/A

Am

E

9

Am

B7

sim.

12

Dm/A

Am

E

17

Am

B7

sim.

mf

21

Dm/A

Am

25

C

F#o7

29

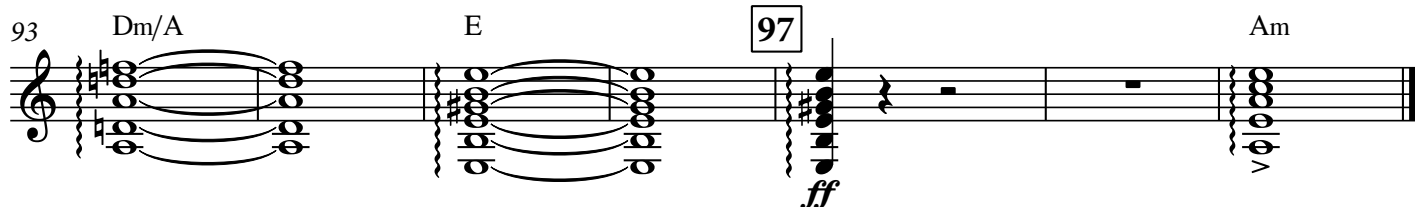
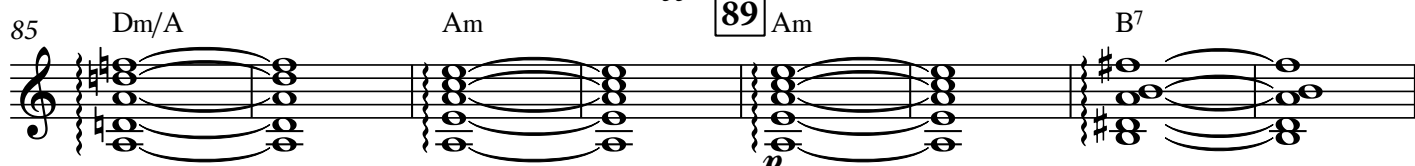
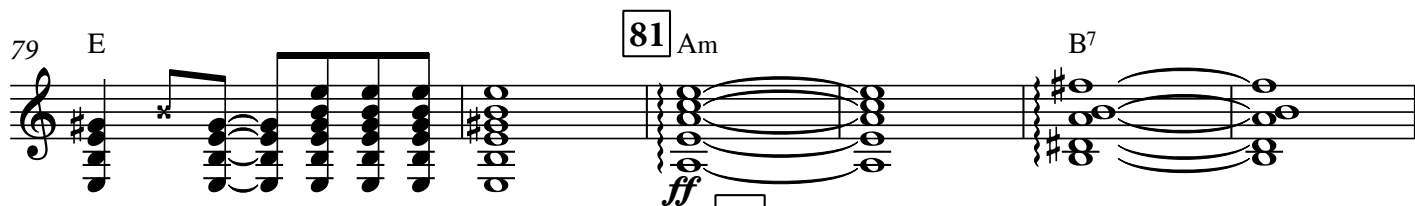
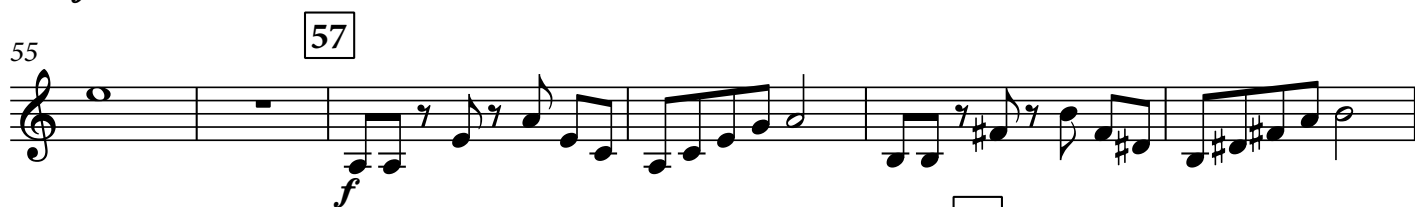
Fo7

E7

33

1 2 1 3 0 3 2 0 2 4 0 4 1 1 3 1 2

p



Guitar 4

Libertango

Astor Piazzolla

arr. Kevin Ray and Michael Tseitlin

$\text{♩} = 140$

Musical score for guitar, measures 1-45. The score is written in 4/4 time and includes various musical notations such as notes, rests, and dynamic markings.

- Measures 1-5: Melodic line starting with a *p* (piano) dynamic. Measure 9 is boxed.
- Measures 6-10: Continuation of the melodic line.
- Measures 11-15: Melodic line with a *mf* (mezzo-forte) dynamic. Measure 17 is boxed.
- Measures 16-20: Melodic line with a *p* (piano) dynamic. Measure 21 is boxed.
- Measures 21-25: Melodic line with a *mf* (mezzo-forte) dynamic. Measure 26 is boxed.
- Measures 26-30: Melodic line with a *p* (piano) dynamic. Measure 31 is boxed.
- Measures 31-35: Melodic line with a *p* (piano) dynamic. Measure 36 is boxed.
- Measures 36-40: Melodic line with a *p* (piano) dynamic. Measure 41 is boxed.
- Measures 41-45: Melodic line with a *p* (piano) dynamic. Measure 46 is boxed.

Additional markings include:

- Measure 33: *x: slap strings* and *Am over soundhole*.
- Measure 34: *B7* and *sim.* (sustained).
- Measure 35: *Dm/A* and *Am*.
- Measure 41: *C* and *F#07*.
- Measure 46: *F#07* and *E*.

2

Guitar 4

